

Fuel filter



Warning

Removal of the fuel filter involves partial dismantling of the car's fuel system. The following points must therefore be observed in connection with this work:

- Make sure a class BE fire extinguisher is close to hand! Consider the risk of sparking, e.g. when breaking circuits, short-circuits etc.
- Absolutely No Smoking!
- Ensure that there is a good exchange of air. If approved ventilation for the extraction of fuel fumes is available, this should be used.
- Wear protective gloves! Prolonged exposure of the hands to fuel can cause irritation to the skin.
- Wear protective goggles.

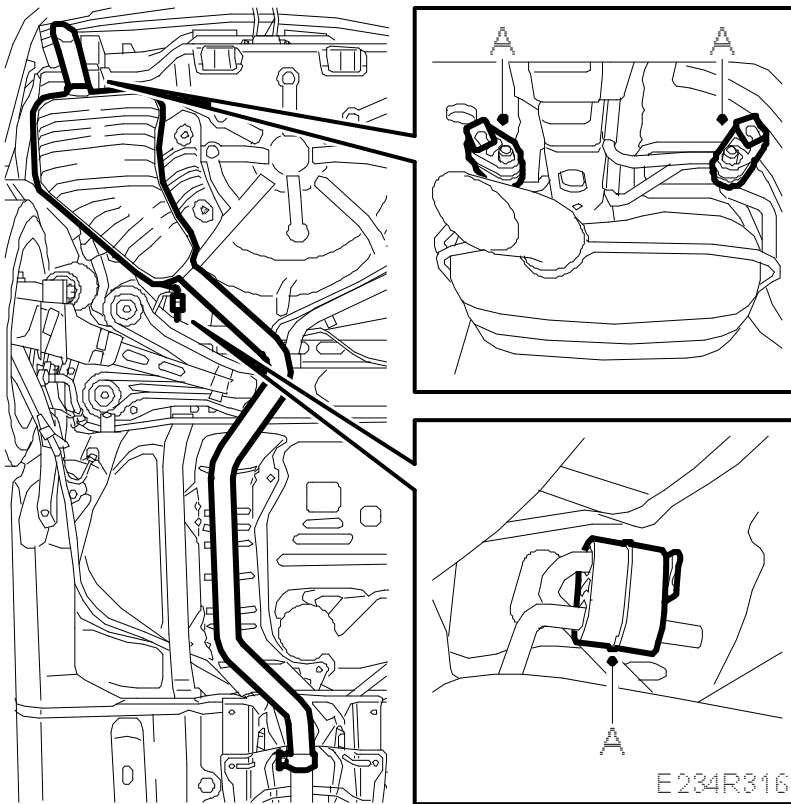
To remove

Important

Maintain a very high level of cleanliness when working with the fuel system. Even very small particles can cause malfunctioning of the system. Store all components in such a way that they cannot be contaminated.

1. Raise the car.
- 2.

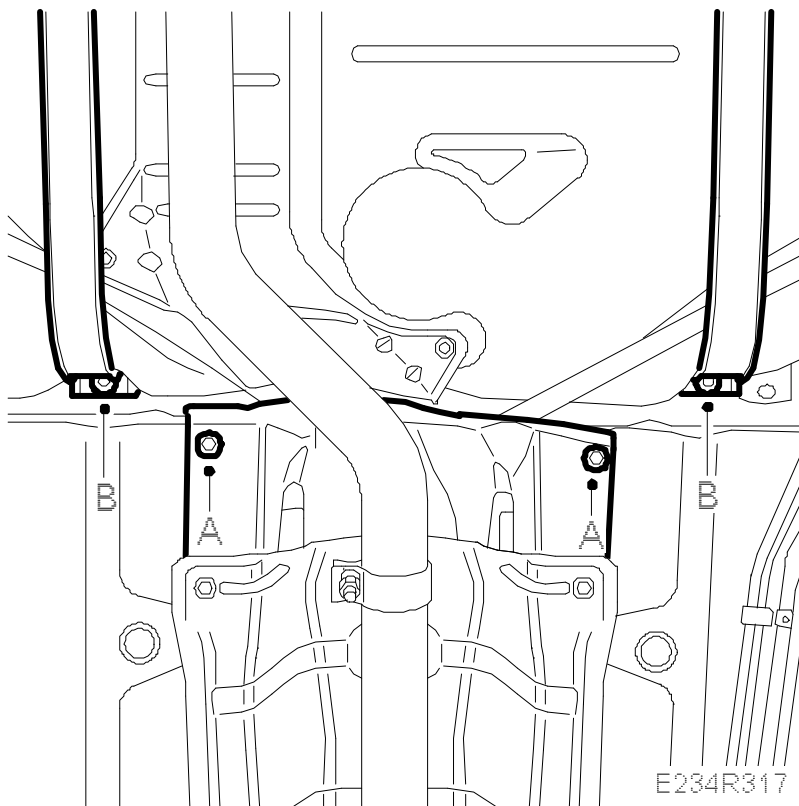
Secure the exhaust system with [83 95 212 Strap](#), remove the rubber mountings of the rear silencer (A) and lower the exhaust system approx. 50 mm.



3. Relieve the load on the fuel tank using a column jack.

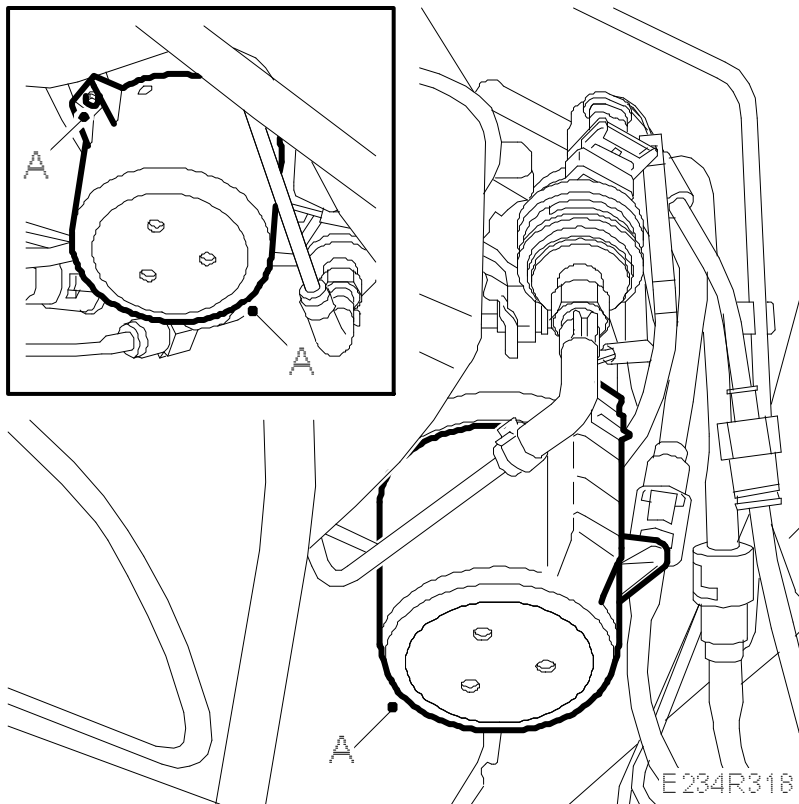
4.

Remove the rear nuts of the heat shield (A).

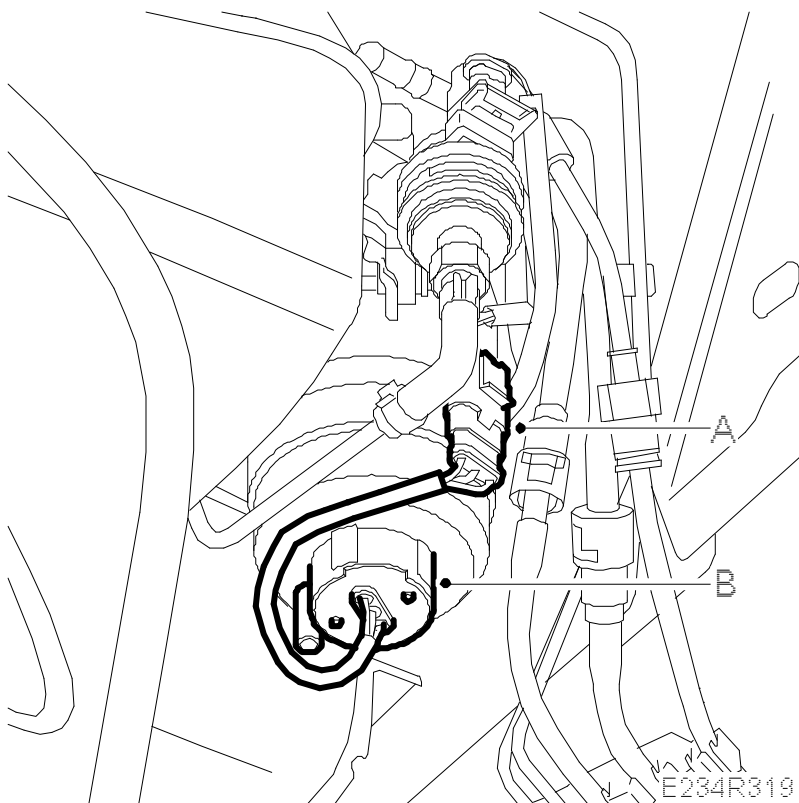


5. Remove the front bolts of the tank strap (B) and lower the front edge of the fuel tank until tool EN-49036 can be connected to the fuel filter's adapter housing.
- 6.

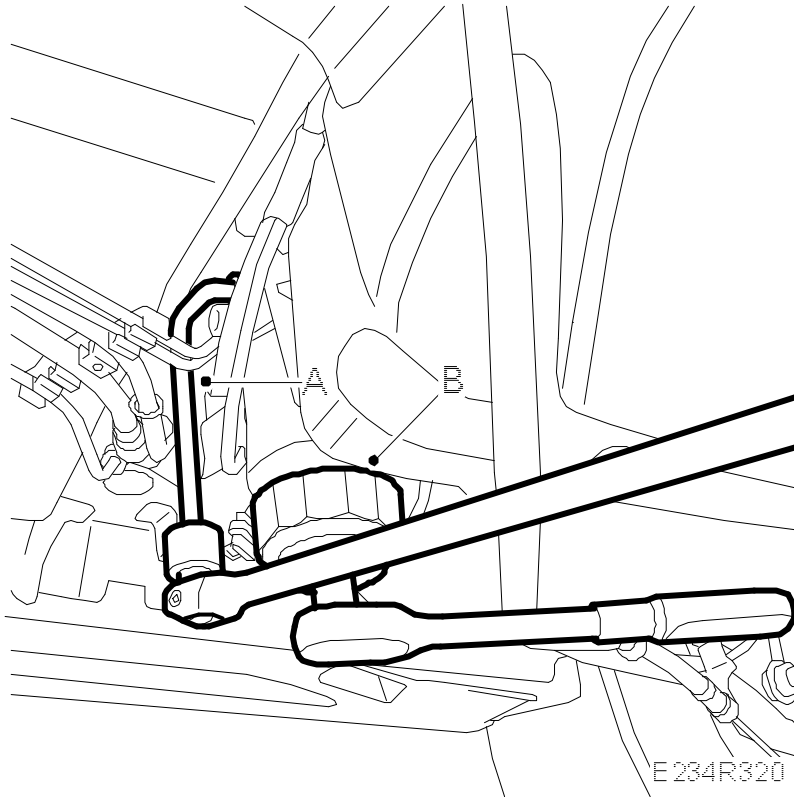
Remove the protective cover (A).



7. Unplug the water level sensor connector (under the filter) (A). Remove the water level sensor (B) by turning anticlockwise.



8. Catch any spilled fuel and clean the area at the filter gasket with compressed air.
9. Remove the filter using [32 025 056 Fuel filter wrench](#) (A). Hold the fuel filter adapter housing with tool [EN-49036 Holding tool](#) (B). Catch any fuel spill.

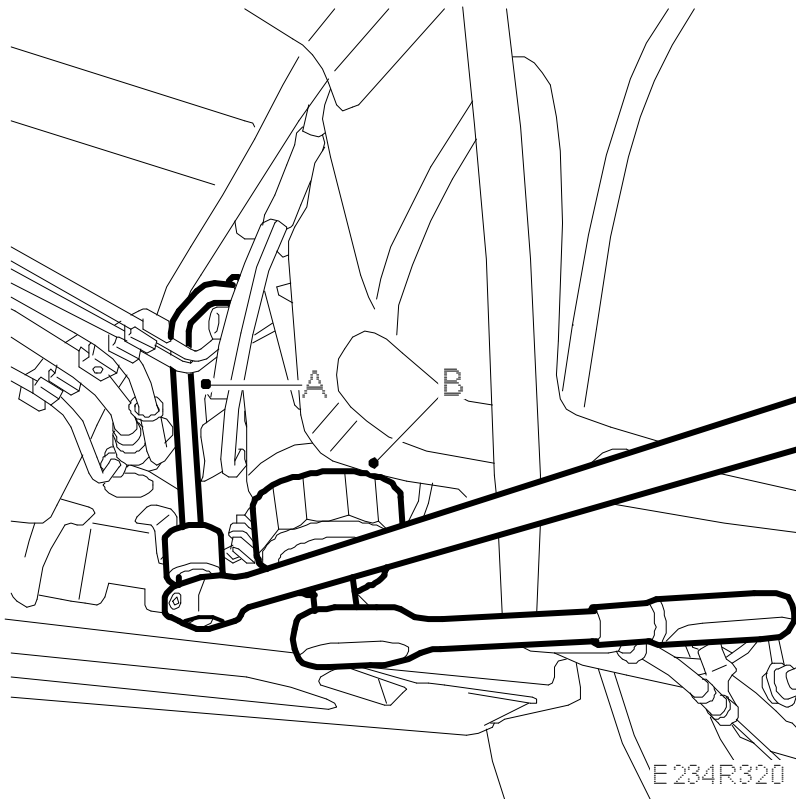


To fit

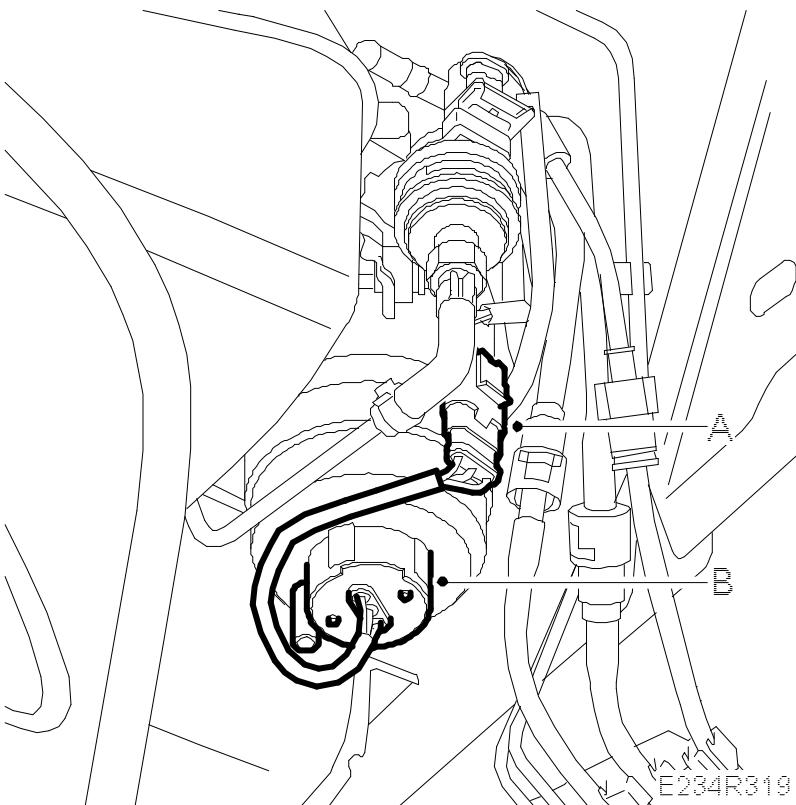
1. Moisten the gasket with diesel fuel.
- 2.

Fit the fuel filter. Use [32 025 056 Fuel filter wrench](#) (A). Hold the fuel filter adapter housing with tool [EN-49036 Holding tool](#) (B).

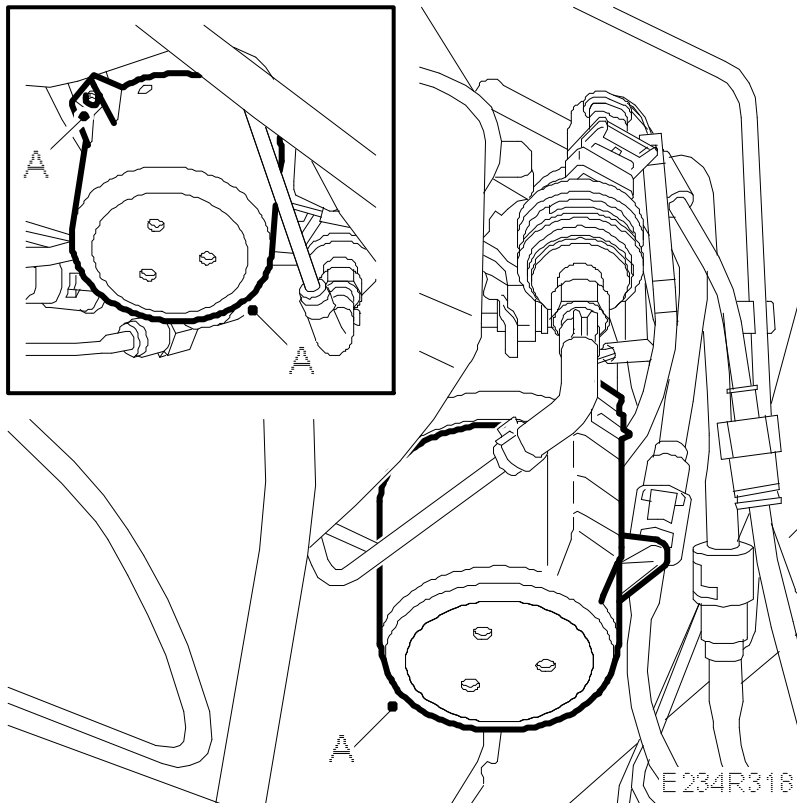
Tightening torque: 20 Nm (15 lbf ft)



3. Fit the water level sensor (B) and plug in the connector (A).



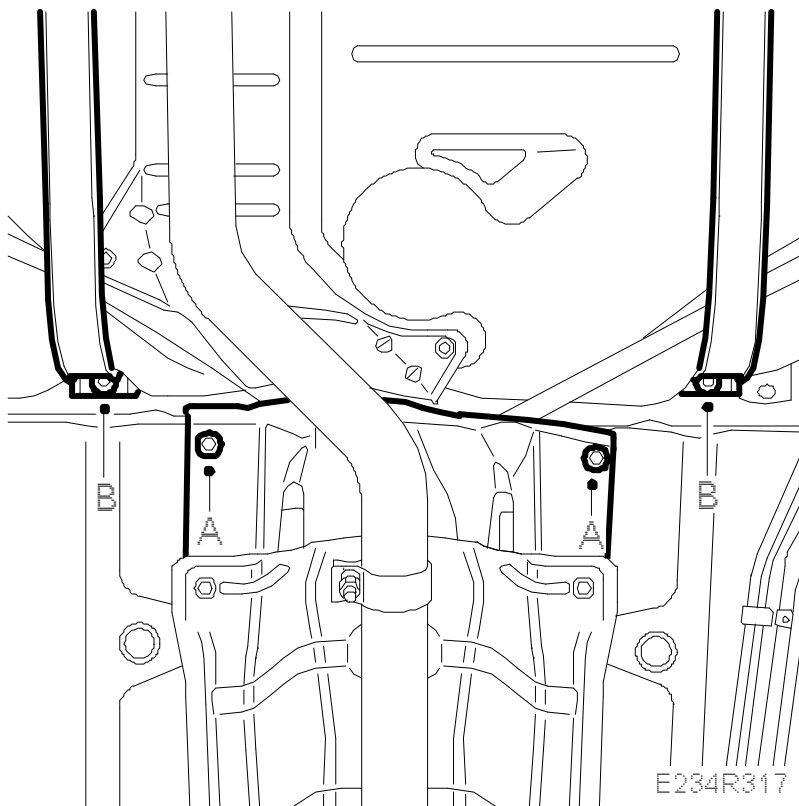
4. Fit the protective cover (A).



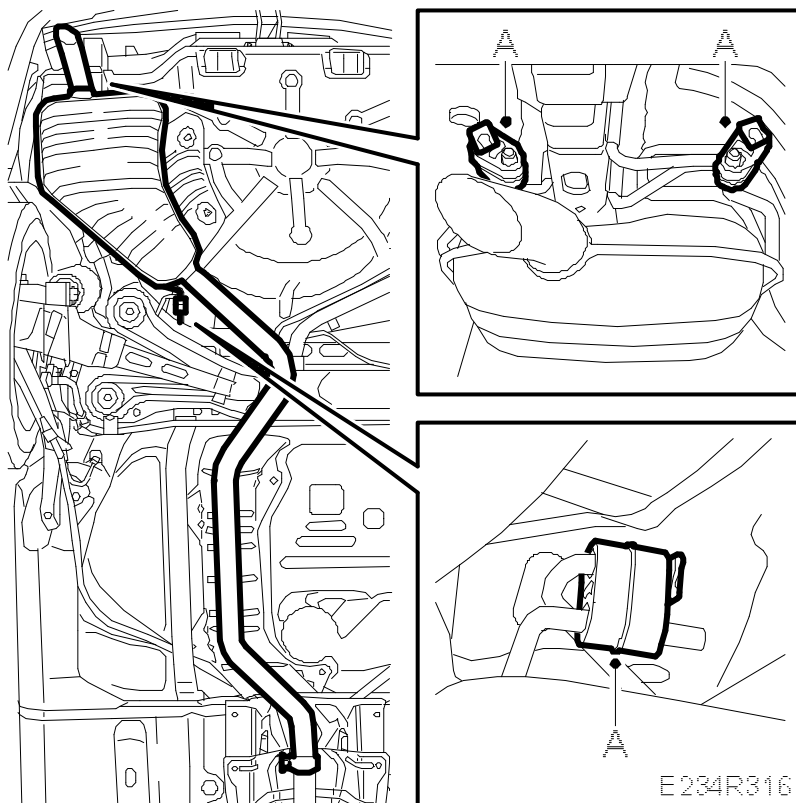
5. Carefully raise the tank, ensuring that its wiring harness does not become trapped.
- 6.

Position the handbrake cables in the groove in the tank, fit the tank strap (B) and lower the column jack.

Tightening torque: 25 Nm (18 lbf ft)



7. Fit the rear nuts of the heat shield (A).



8. Raise the exhaust system and fit the rubber mountings.
9. Lower the car to the floor.
10. Connect an exhaust hose and start the engine for a functionality check.